

## The Lobster Pot Camera System

Lobster Pot 4 (LP4) redefines construction time lapse and monitoring. We have brought decades of construction industry experience to design and build the most resilient, power-efficient and reliable camera possible.



### LP4 camera: Technical features & highlights



#### Remote Diagnostics

To keep your cameras running smoothly, for when it matters most.



#### Professional Lens and sensor

Lets you capture in razor sharp imagery and high resolution.



#### IP67 Weatherproof

Withstands the extreme conditions on any site.



#### High Performance Solar Unit

Powers through even the gloomiest of weather.



#### Built in SIM Card

Works anywhere in Europe.



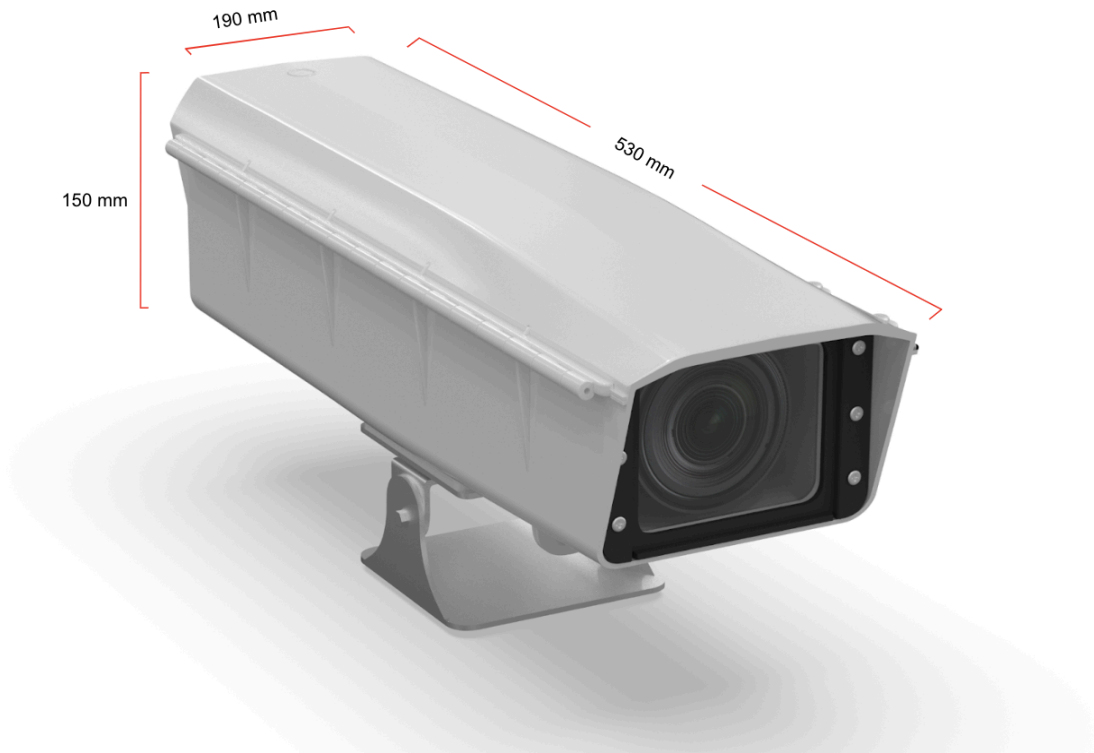
#### Saves Time

Easy sharing, reduces site visits.

## The LP4

LP4 uses a digital stills camera, a professional lens and a high capacity lightweight battery and solar panel, for installation anywhere. The secure connection to Lobster Vision lets you easily share and show off your project in the highest quality available.

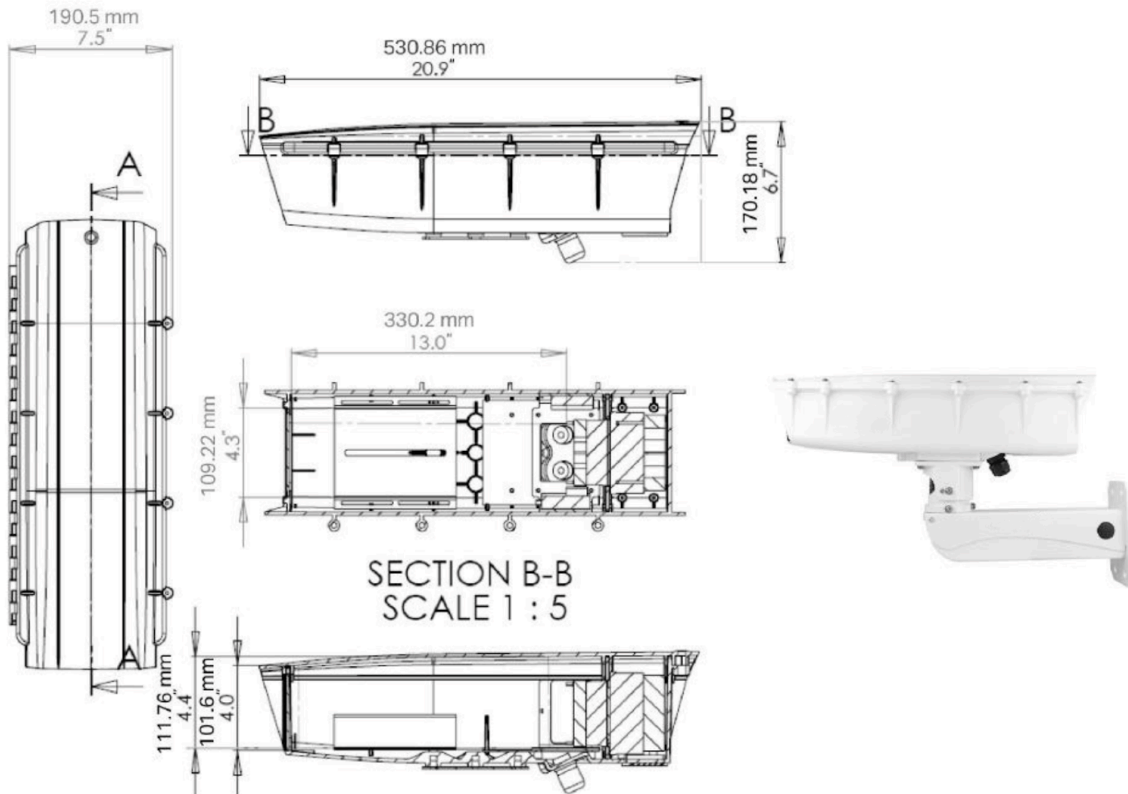
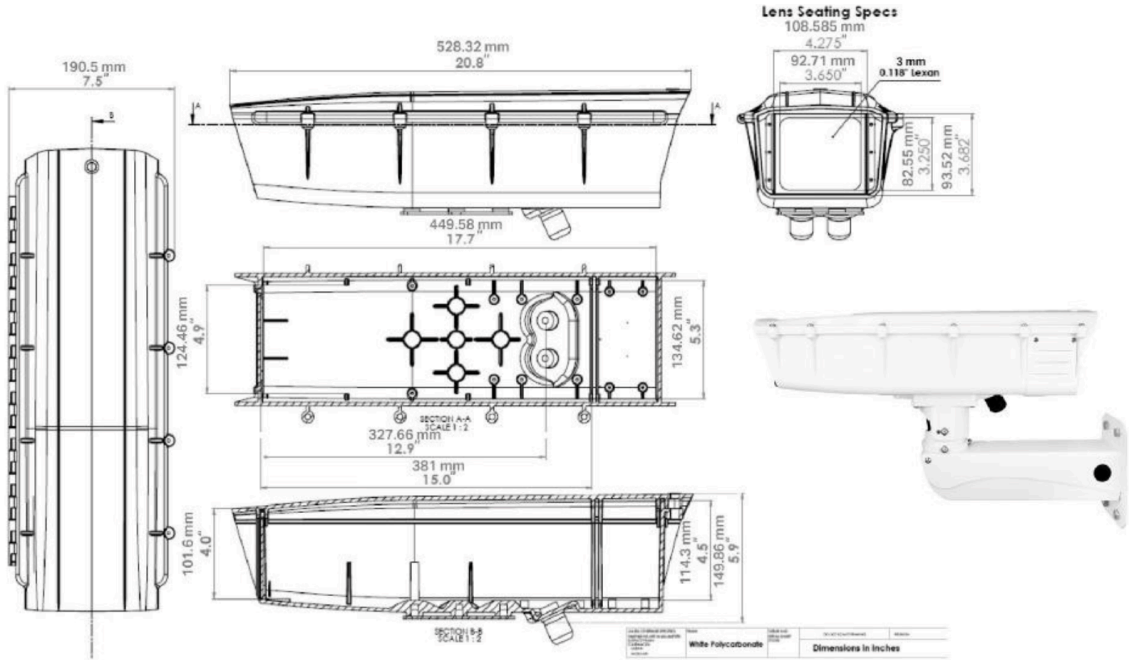
At Lobster Pictures we're proud to be one of the few time lapse companies to test, build and develop our cameras in-house, at our workshop facility here in Bristol, UK.



### LP4 camera: Weight and Dimensions

Weight	Length	Width	Depth
6 kg	530 mm	190 mm	150 mm

# Technical drawings



# Technical sheet

<b>6K variant: Image Quality</b>	
Resolution	6000 x 4000 (24 megapixels, 12 times HD resolution)
Sensor	Canon APS-C
Lens	Canon 10-22mm Field of View: 54-97° horizontal, 38-74° vertical
<b>9K variant: Image Quality</b>	
Resolution	9500 x 6300 (61 megapixels, 30 times HD resolution)
Sensor	Sony full-frame 35mm
Lens	Nikon 17-35mm <sup>1</sup> Field of View: 54-93° horizontal, 38-70° vertical
<b>Time Lapse and Monitoring with Lobster Vision</b>	
Interval time	10 minutes, standard 30 seconds, short periods <sup>2</sup>
Time Lapse	Create HD films of any part of the frame and any times and dates Professional editing services available
Lobster Vision	Full administrative access Add, remove and manage user access Download full-resolution images Compare progress at any date or time
<b>Communications</b>	
Wifi	Ad-hoc wifi to allow fast set up Live view included
Cellular	4G SIM card included Use your own SIM option <sup>3</sup>
<b>Data Security</b>	
Encryption	128-bit AES encryption between camera and Lobster Vision
Localisation	AWS platform allowing localisation in any AWS-presence territory.
Obscuring	Face blurring, area blocking, blurring or pixelation
<b>Environmental</b>	
Dimensions	Enclosure only: 528mm(l) x 150mm(h) x 191mm (w) <sup>4</sup>
Weight	6.2 kg including knuckle
IP rating	IP66 (dust-tight, protected against powerful water jets)
Temperature range	-20°C to +55°C
<b>Electrical</b>	
Power source	12v DC IP68 outdoor mains power adapter supplied: 100-230v AC, 50-60Hz Solar panel can be supplied (50W)
Internal battery	Lithium Iron Polymer 12.8v, 12Ah Total energy 153.6 Wh Powers system for nine days under standard conditions <sup>5</sup>
Warranty	Self-Install model: two year return to base Full Service model - any issue that cannot be resolved remotely, our team will attend at no cost to repair, worldwide <sup>6</sup>